

Examples of application



.....Semi trailers



.....Swap trailers



.....Mobile toilets



.....Container



.....Trailers

...and many other possibilities!

tracker

Cradle

„Click and ready“ is the fastening principle for the BEKAtraX tracker. First of all, the mounting device is assembled at the object, then the BEKAtraX tracker is clicked in. Ready!

An alarm signal is send in case of manipulations or demountings.

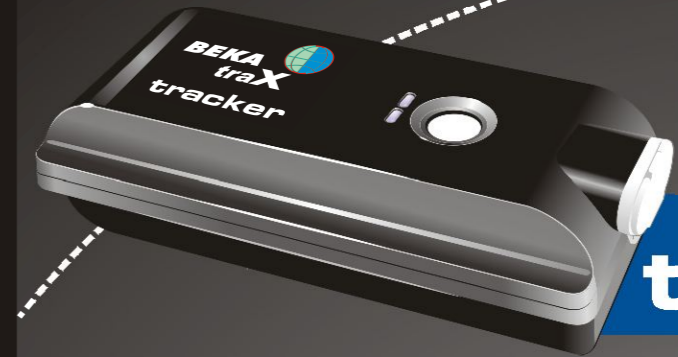
Battery charger

The BEKAtraX tracker informs you per alarm signal about the time for a necessary recharging. The suitable battery charger can be found in our range of accessories.

Technical data

Dimensions (LxWxH):	154,5 x 81,2 x 44,8mm
Temperature range:	-20°C to +45°C
Weight:	500g
Accumulator:	Internal, rechargeable accumulator Lithium ion polymer 3,7V - 13600mAh
Load cycle:	Without loading up to 2,5 years, depending on interval of use and ambient temperature, with one localization/day
Feedback:	2 status LEDs
Ignition input:	Ignition is emulated
GPS:	20 channel SIRF III
GSM:	4-channel (850/900/1800/1900 MHz)
Interfaces:	Load connection
Signal sources:	Button at front Button for status: „mounting fixed or demounted“ 3D motion sensor

Monitoring of currentless objects



tracker

- Up to 2,5 years of localization and anti-theft protection of currentless objects without recharging
- Clear view of objects on digital maps via Internet PC
- Sturdy, compact design
- Integrated motion sensor
- Emergency button
- Protection class IP 65, thus splash- and dust proof as well as shockproof
- Status information for accumulator capacity
- Quick use without assembly due to click mounting plate

XT2182000410 GB 1090200375

BAIER + KÖPPEL GMBH + CO PRÄZISIONSAPPARATEFABRIK
91257 Pegnitz/Germany Beethovenstr. 14
fon: +49(0)9241/729-158 fax: +49(0)9241/729-139
e-mail: bekatrax@beka-lube.de www.beka-lube.de

The Telemetric Platform

...made by BAIER+KÖPPEL

If you want to know what's going on
...also without current supply!



Features, you really need.



The new BEKAtraX tracker monitors currentless objects via GPS. Due to its enormous accumulator capacity and the innovative energy management, this localization modul applies new standards.

From now on, the localization of trailers, semi-trailers, swap trailers, containers, mobile toilets, pallets, components, wood piles or hired cars is a breeze.

The transmission of the localization signals is done via GSM mobile phone network per GPRS to the BEKAtraX web portal. This facilitates a worldwide access from every internet PC without additional software.

The compact design with protection class IP 65 also enables a use in a robust area with splashing water or dust.

The BEKAtraX tracker can localize objects up to 2.5 years without an external current supply with one localization signal per day - without recharging!

Also the assembly is done easily and quick due to the click mounting plate.



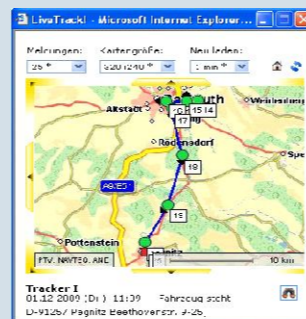
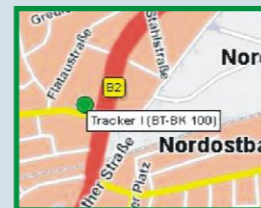
TRACKER

Localization

Monitored objects report automatically with a current time stamp at preadjusted times (hourly or daily) and an exact position information with a precision of up to 5 meters.

If the object moves, the ignition signal is emulated and the display changes from green to red.

In order to display the objects, highly resolved, digital maps of Europe are available. The cards are regularly updated.



In the event of theft, the object is pursued on the display per "Live Track".

Condition monitoring

The integrated motion sensor recognizes every change of position and sends an alarm signal if requested. The localization signal contains a time stamp, the exact position and the condition information. Due to the movement of the object, the display of the emulated ignition signal in the position message, changes from green to red. Additionally the direction and speed are displayed situational.

An emergency call can be transmitted at any time with the emergency button. The emergency call is displayed in the portal and send to any defined recipient per e-mail or short messages.

The battery display informs you when the accumulator of the modul has to be loaded again (green = full, yellow = partly unload, red = reload necessary). Details concerning the loading conditions (volt and %) can be found in the portal.

Situational changes of signals and conditions can be injected with the alarm manager in order to trigger an alarm.

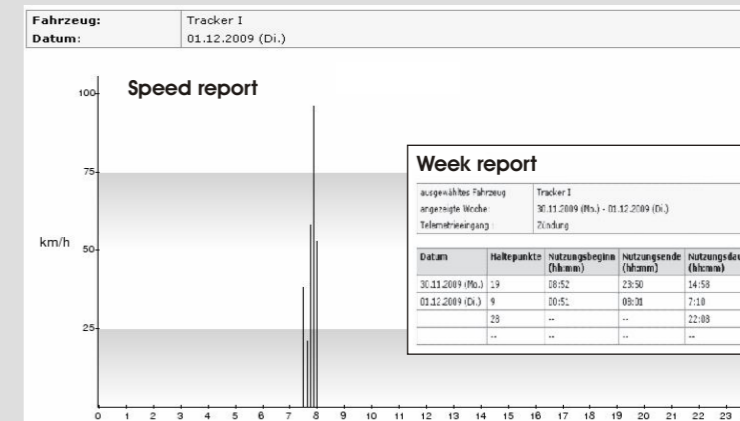
Datum	Vorgang	Position
26.11.2009 14:29:31 (Do.)	Telemetriemeldung: Zündung 4.2532 V / 94% Bat. Distress Zündung	D-91257 Pegnitz Pfarrer-Dr.-Vogl-Str. 9-29, 6-12
26.11.2009 14:28:59 (Do.)	Telemetriemeldung: Distress 4.2532 V / 94% Bat. Distress Zündung	D-91257 Pegnitz Besthovenstr. 9-25

Anti-theft protection and area monitoring

Objects like vehicles, trailers, semi-trailers, swap trailers or containers can be protected from theft by means of the area monitoring function. The variable adjustable stand-by mode (hourly or daily) actively supports the monitoring function.

The electronic fencing of operational areas like e.g. plant areas, parking lots or construction sites, activates alarm in case of passing of the predefined area borders.

In this case, the alarm manager generates messages for up to three email addresses or mobile phones per SMS.



Datum	Haltepunkte	Nutzungsbeginn (hh:mm)	Nutzungsende (hh:mm)	Nutzungsdauer (hh:mm)	Standzeit (hh:mm)	Fahrzeit (hh:mm)	KM Start	KM Ende	KM Schnitt	Kraft	Fahrer
30.11.2009 (Mo.)	19	08:52	23:50	14:58	16:57	4:02	0	0	0	0	0
01.12.2009 (Di.)	9	00:52	09:01	7:10	6:21	0:49	0	0	0	0	0
...	29	22:09	17:38	4:50
...	76.2%	21.6%

Reporting

Useful reporting features like e.g. reports of weeks, speed or routes make processes and situations easy to comprehend and transparent.



The Telemetric Platform

...made by BAIER+KÖPPEL